

HOW TO FIND US

Plymouth Sailing School is now working in conjunction with SeaRegs Training Ltd. Our training centre can be found at **Turnchapel Wharf, Barton Road, Plymouth, PL9 9RQ.**

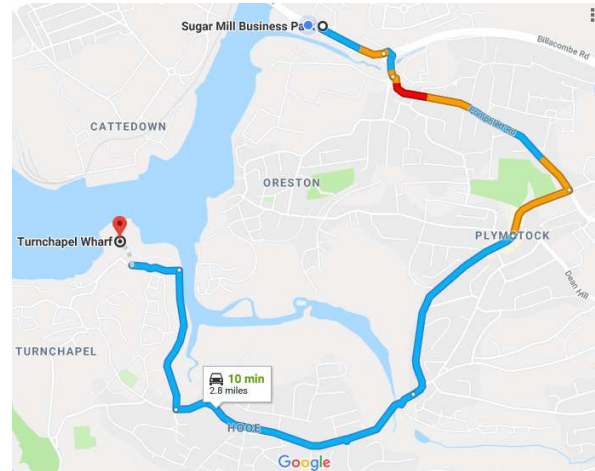
We can be found in the grey building just to the left of the Wharf entrance. Our office is on the ground floor as you enter the building. We have a workshop also on the ground floor and 3 classrooms upstairs. There is plenty of parking available – please only park in the white boxes. The blue boxes are reserved.

BY CAR

Turn left off A38 at Marsh Mills roundabout onto A374 signed Plymouth City Centre.

After approximately 1 mile, stay in the left-hand lane for the A379 signed to Plymstock. This takes you across Laira Bridge and past the Sugar Mill Retail Park and The Range on your left, where you will see the first signs for Mount Batten and Turnchapel. At the roundabout, take the second exit, then the second exit at the next mini roundabout. Cross the pedestrian lights, and continue straight on until the traffic lights at a crossroads where you should turn right.

Go straight through a second set of lights. Keep on this road straight over three mini roundabouts. At the fourth mini roundabout (with a children's playground on the right), turn right into Barton Road and keep driving (ignore the "private road" sign) until you pass the Guardroom Café on your right. The entrance to Turnchapel Wharf should then be the next entrance on the right.



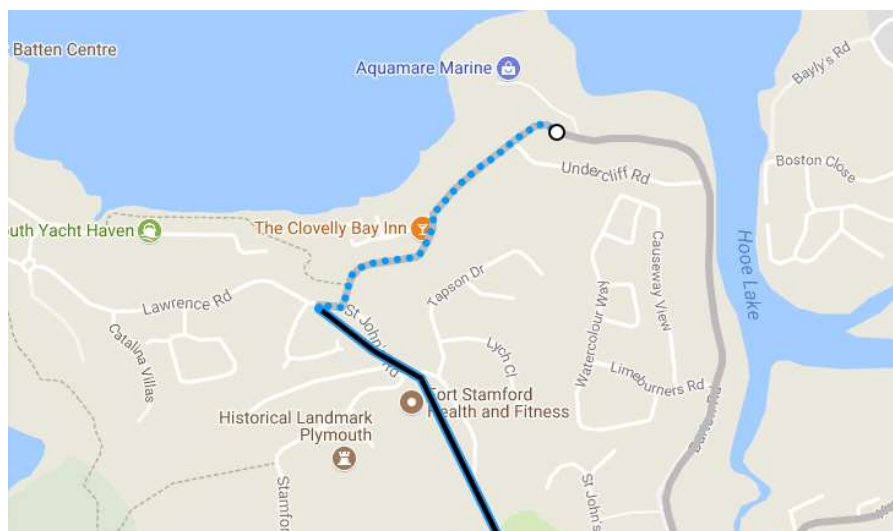
PUBLIC TRANSPORT

Plymouth train station is approximately 5.0 miles away, about a 30 minute taxi journey.

If travelling by bus from the city centre, the Stagecoach number 2 bus leaves from Royal Parade (Stop A6) and you can stop at Cunliffe Avenue, approximately a 5 minute walk from Turnchapel Wharf.

Route information for the number 2 Bus Route can be found here:

<https://www.stagecoachbus.com/routes/south-west/2/mount-batten-saltash/xdbo002.i>



Walking directions from Cunliffe Avenue to Turnchapel Wharf

Please see the next page for details on the Mount Batten Ferry.

SeaRegs Training Ltd TA Plymouth Sailing School, Turnchapel Wharf, Barton Road, Plymouth PL9 9RQ

Tel: 01752493377 / 01752408270 email: school@plymsail.co.uk

www.plymsail.co.uk ©SeaRegs Training

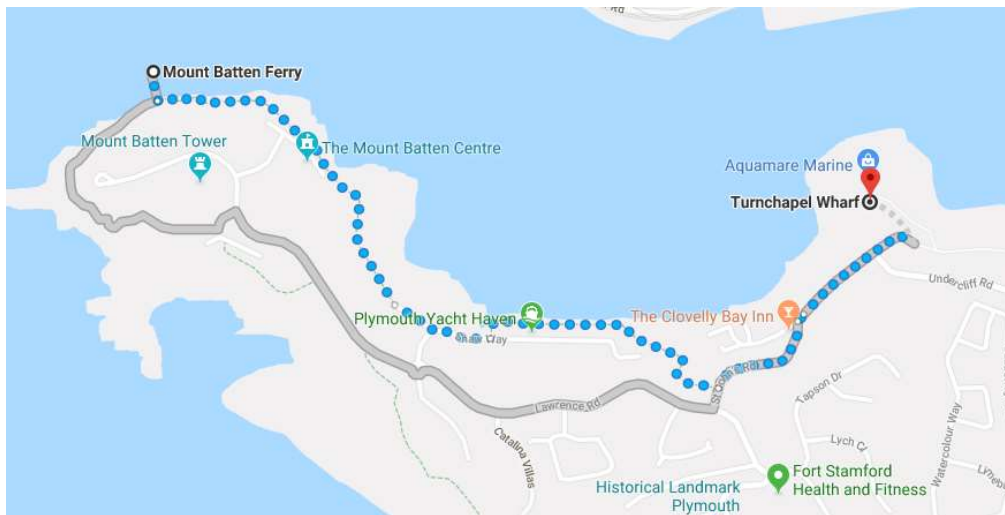
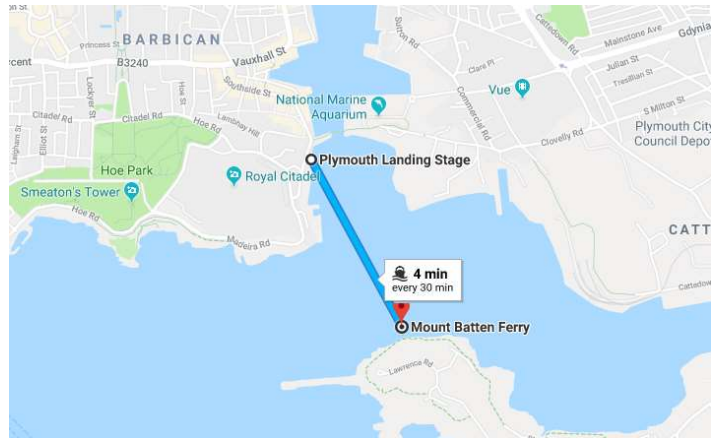
Version 1 – 14/09/2018

MOUNT BATTEN FERRY

This operates between the Barbican and Mount Batten all year round.

Ferries are run every 30 mins, departing from the Barbican side at quarter past and quarter to the hour and the Mount Batten (Turnchapel) side on the hour and half hour.

From the ferry it is approximately a 15-20 minute walk to Turnchapel Wharf following the South West Coast Path.



Walking directions from Mount Batten Ferry

If you require further assistance or more information about getting to our premises, then please don't hesitate to contact us.

Please let us know if you are running late.

| | |
|---------------|---------------------|
| Office | 01752 493377 |
| Vicky | 07768 383356 |
| Simon | 07711 022003 |

school@plymsail.co.uk

We look forward to meeting you!